

# **Shade Tree Commission**

## **Meeting Minutes**

Thursday, October 6, 2022, 1:00 P.M.

Hybrid – In-Person and Zoom

The Lemoyne Borough Shade Tree Commission meeting of October 6, 2022 was called to order at 1:00 P.M.

Present in-person were Commission Chair John Leverentz and Commission Members Ed Dix and Marsha Everton.

Lemoyne Borough Executive Assistant Jenn Erickson and Lemoyne Borough Maintenance Superintendent Cliff Karlsen participated by Zoom.

No public was present.

### **Public Comment**

There were no public comments.

### **Approval of Minutes**

Ms. Everton made a motion to approve minutes of the July 25, 2022 meeting.

Mr. Dix seconded the motion. The Commission voted unanimously to approve the minutes.

### **New Business**

1. Mr. Leverentz noted that there were no new permit applications for review.
2. Mr. Leverentz introduced the topic of an overall plan for shade trees in Lemoyne Borough.
  - The Commission discussed options for organizing the plan and agreed to use three primary sections:
    - What Do We Have
    - What Do We Need
    - How Do We Get There
  - The Commission agreed to track the planning process through a separate document that will be updated and included as part of the minutes of each meeting.
  - The discussion outline from the October 6, 2022 meeting is attached to these minutes.
  - The Commission agreed to continue to add to this outline at its next meeting

**Adjournment**

Following a motion by Mr. Dix and seconded by Ms. Everton, the meeting was unanimously adjourned at 2:22 P.M.

**Next Regularly Scheduled Meeting**

November 3, 2022, 1:00 P.M. at Lemoyne Borough Office Building with video conference participation option

# **Lemoyne Borough**

## **SHADE TREE MASTER PLAN**

### **Working Document to Capture Ideas and Discussions**

Draft October 6, 2022 with October 15 edits

This plan is organized into three sections:

- What Do We Have
- What Do We Want
- How Do We Get There

#### **What Do We Have**

- Shade Tree Commission Guidelines and Council Vision Statement as Adopted by Lemoyne Borough Council on July 28, 2022.
- Current annual budget of \$1,000.
- Lemoyne Borough online inventory of trees with map, noting that the inventory needs to be updated.
- [Penn State Community Tree Plan Guide](#).
- [Tree Equity Score data](#) to confirm current canopy coverage and identify target coverage by Lemoyne neighborhood
- Tree Pittsburgh example (acknowledging their larger budget and the opportunity to learn from findings in their big budget initiative) ([link here](#)).
  - See history for master planning ideas for larger community and collaboration.
  - Urban Forest Master Plan example ([link here](#)). Full PDF report [link here](#).

#### **What Do We Want**

- Increase Lemoyne Borough tree canopy to target levels to enhance the beauty of the community and support economic development.
- Optimize contribution of trees to Borough storm water management objectives.
- Remove and replace invasive species trees.
- Increase public awareness of the importance of trees to our community and how individuals and businesses can support development of a healthy tree canopy.

## **How Do We Get There**

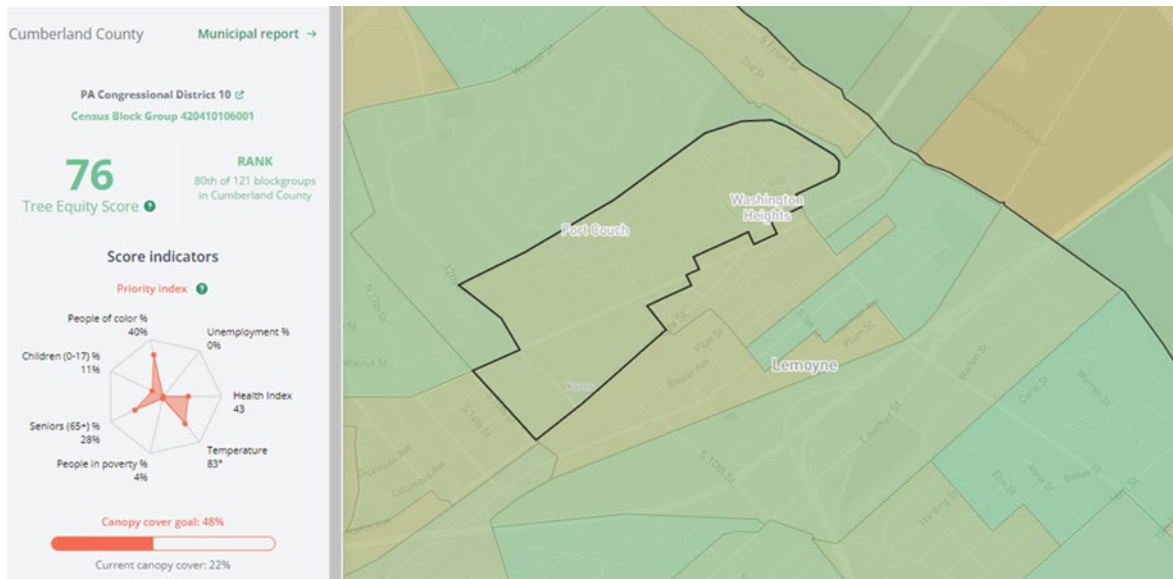
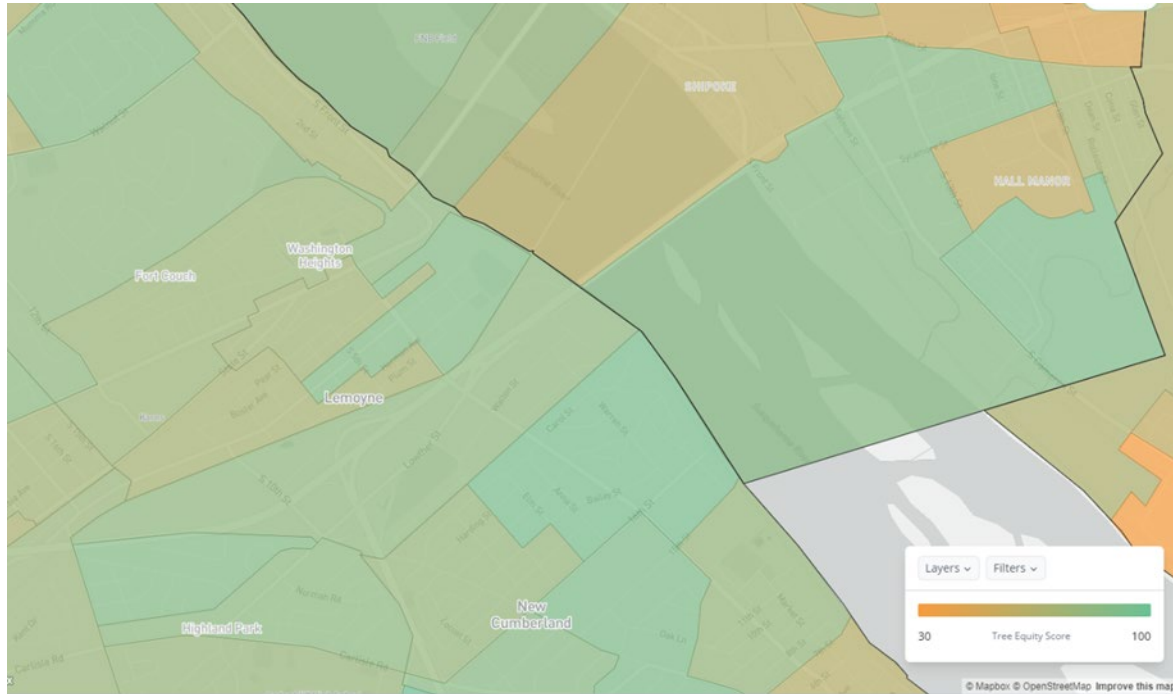
1. Engage in **collaboration opportunities** to develop synergies within Lemoyne Borough and in the general geographic area:
  - Collaborate with the Lemoyne Borough Community Development/Parks and Recreation Committee, especially in the context of their work on a Park Master Plan.
  - Confirm Lemoyne Borough storm water management objectives and opportunities to collaborate. Specifically contact Kasha Griva.
  - Reach out to neighboring boroughs and townships to explore how we can collaborate.
    - John Leverentz to contact Camp Hill Shade Tree Commission for discussion.
    - Specifically explore option to connect with Harrisburg City staff arborist.
2. Build Lemoyne Borough **plan by community segments**, allowing a focus of resources and implementation, area by area.
  - Option to use the Tree Equity Score geographic segmentation, supporting ongoing reporting of canopy metrics ([link here](#)) and to set canopy coverage targets.
    - Current Lemoyne Equity Map ([link here](#)) – showing opportunity for improvement.
    - See specific maps at end of this document.
    - Additional Tree Equity Score resources and best practices for Urban Forestry ([link here](#)).
      - Action Guide ([link here](#)).
      - Community Assessment & Goal-Setting Tool ([link here](#)).
3. Develop a plan to effectively use the current \$1,000 annual Shade Tree Commission **budget** for the purchase and planting of new trees.
  - Over time, as appropriate, request additional funding from the Borough or support from other resources to accelerate new plantings and replacement of invasives.
4. Explore opportunities to use **Arbor Day** as a focal point for collaboration within the Borough and with adjoining communities.
  - Possible joint celebration and activities.
  - Arbor Day ([link here](#))
    - Friday, April 28, 2023 is next Arbor Day (always last Friday in April).
    - Alliance for Community Trees (Arbor Day Foundation program ([link here](#)).
    - Potential Sponsor/Partner outreach ([link here](#)).
    - See Upper Dublin Township (Montgomery County) example ([link here](#)).
    - Adopt-A-Tree Day, Annual Tree Planting and Heritage Tree Recognition Program.

5. Research option to hire an **arborist to consult** on the Lemoyne Borough Shade Tree Master Plan.
  - Exploration of options to include:
    - General consulting advice.
    - Advice on the types of trees that best meet the needs of Lemoyne Borough and considers factors like narrow tree lawn spaces between the streets and sidewalks.
    - Assessment of overall health of Borough trees, possibly community-by-community rather than the entire community at one time (for expense and implementation of initiatives).
    - Identification of “heritage trees” that should/can be protected and celebrated.
  - John Leverentz to contact [Good’s Tree and Lawn Care](#) and [Bartlett Tree Experts](#) to confirm what type of services are available and at what cost. If appropriate, John will recommend including additional funding in the 2023 Shade Tree Commission budget to support this consulting.
6. Research and confirm options and timelines for **funding, tree donations and consulting** expertise with:
  - [TreePennsylvania](#)
  - [Ten Million Trees for PA](#) and noted that grants and trees will be considered in the 2023 cycle.
    - Note that several [Cumberland County organizations are partners](#) in the Ten Million Trees for PA initiative.
  - [Pennsylvania DCNR Bureau of Forestry](#) (resources that could be useful for planning, especially the [Urban and Community Forestry Council](#), which also administers the statewide [TreeVitalize grants](#).
    - Note the change in TreeVitalize grant programs to the [Bare Root Tree Program](#).
  - Tree City USA Program ([link here](#)).
    - Program of Arbor Day Foundation ([link here](#)).
    - Four-step framework to maintain and grow tree cover ([link here](#)).
    - Pennsylvania Tree Cities ([link here](#)).
      - Carlisle
      - Harrisburg
      - Hershey – Derry Township
      - Highspire
      - Hummelstown
      - Lancaster City
      - Lititz
      - Lower Paxton Township
      - Paxtang
      - York

7. Consider options to recommend different provisions for shade trees in **retail-commercial districts** per Sample Ordinance for Pennsylvania Shade Tree Commission [\(link here\)](#) – published by Pennsylvania State Association of Boroughs.
8. Update Lemoyne Borough **tree inventory**.
  - Confirm number and location of invasive and non-invasive species trees.
  - Confirm desired number and type of trees and tree replacements to meet canopy coverage objectives by segmented areas of the Borough.
9. Identify **funding needed from Borough** to achieve objectives.

# Appendix

Current Lemoyne Borough Tree Equity Score Maps and Segments [\(link here\)](#)

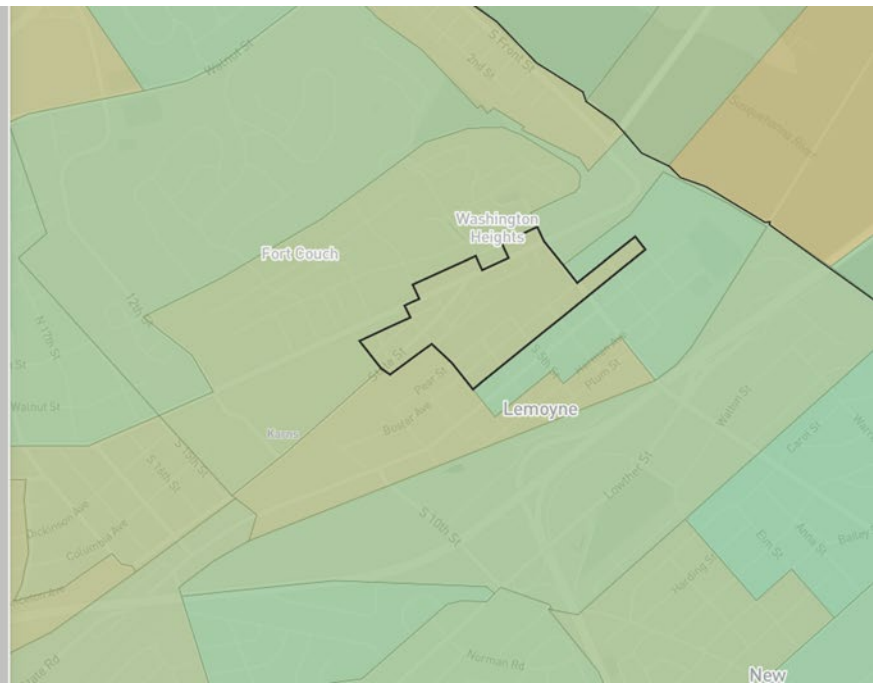
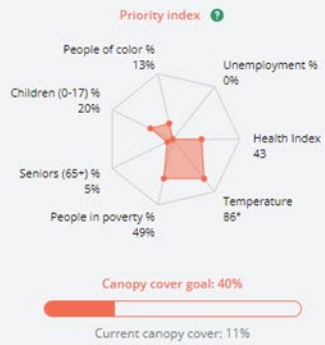


PA Congressional District 10  
Census Block Group 420410106002

**73**  
Tree Equity Score

**RANK**  
86th of 121 blockgroups  
in Cumberland County

#### Score indicators

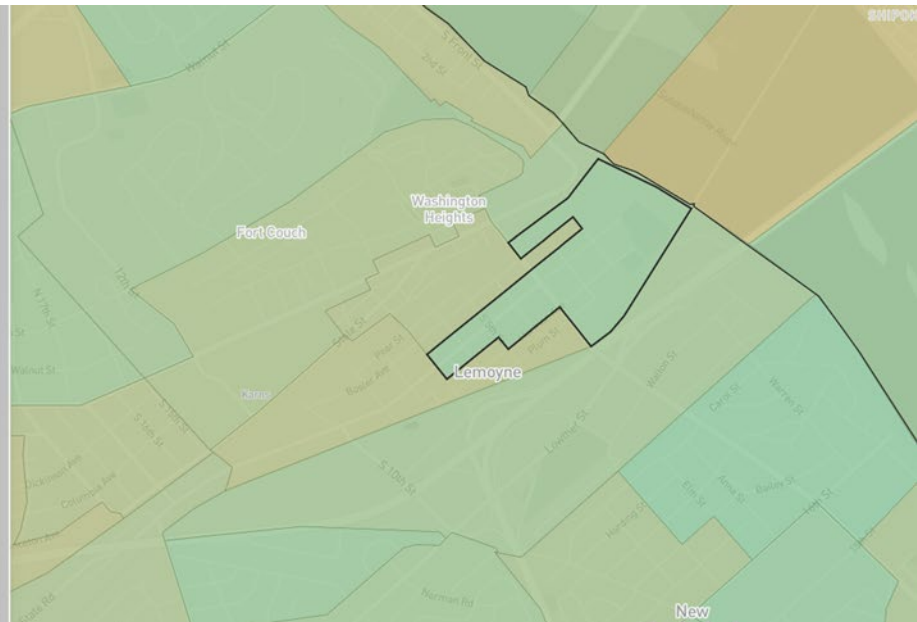
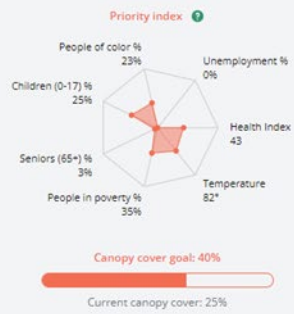


PA Congressional District 10  
Census Block Group 420410106003

**87**  
Tree Equity Score

**RANK**  
32nd of 121 blockgroups  
in Cumberland County

#### Score indicators





PA Congressional District 10 [📍](#)  
Census Block Group 420410106004

82

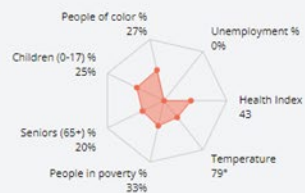
Tree Equity Score 

RANK

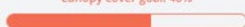
52nd of 121 blockgroups  
in Cumberland County

### Score indicators

Priority index ?



Canopy cover goal: 48%



Current canopy cover: 29%

PA Congressional District 10

[District report →](#)